

SKYWATER

AT MOVALA

PENTHOUSE COLLECTION



BESPOKE PENTHOUSE RESIDENCES

Skywater's Penthouse Collection is the crown jewel of Movala. These bespoke, elegant residences, curated by award winning Begrand Fast Design, are the pinnacle of luxury, exemplifying a new standard in modern beachside living. Boasting on average 4,651 square feet of indoor/outdoor living with expansive covered terraces for you to enjoy the unparalleled views of Okanagan Lake. Skywater's Penthouse Residences are for the most discerning of homeowners desiring the height of luxurious living.

BEAUTIFUL INSIDE & OUT

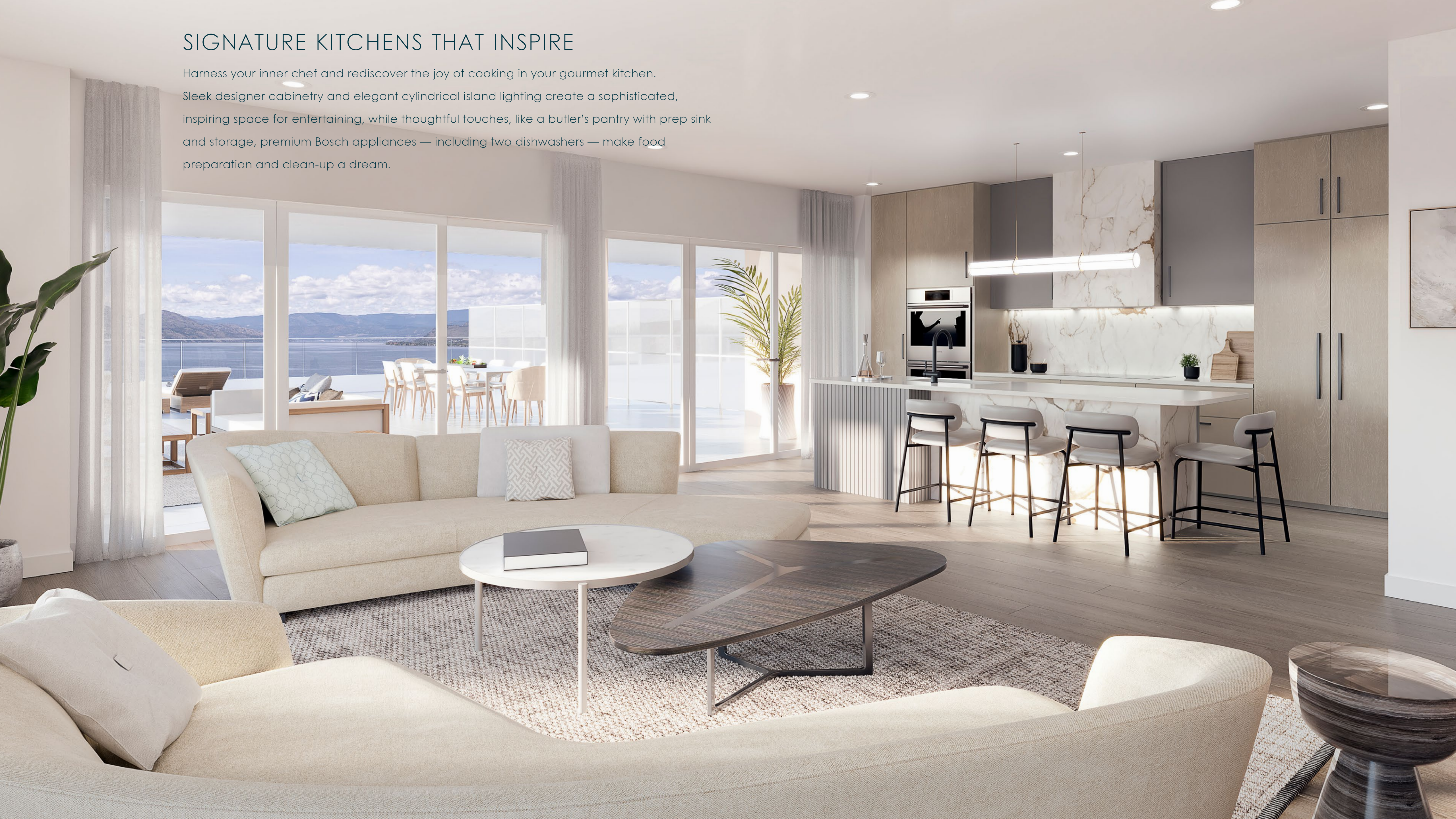
Thoughtfully curated living spaces with timeless European wood plank flooring, designer flat-panel millwork, and custom wine displays complement oversized floor-to-ceiling windows and patio doors that encourage seamless indoor/outdoor living.



SIGNATURE KITCHENS THAT INSPIRE

Harness your inner chef and rediscover the joy of cooking in your gourmet kitchen.

Sleek designer cabinetry and elegant cylindrical island lighting create a sophisticated, inspiring space for entertaining, while thoughtful touches, like a butler's pantry with prep sink and storage, premium Bosch appliances — including two dishwashers — make food preparation and clean-up a dream.



A RETREAT FOR THE SENSES

Perfect the art of relaxation in your exquisite master suite. Custom Begrand Fast designed millwork features elegant pendant lighting as the room's centrepiece, while floor-to-ceiling glass patio doors let in natural light and showcase the spectacular lake views. Wind down in tranquility and awaken feeling renewed and refreshed.



LAVISH COMFORT

Spa-inspired ensuite and guest baths are luxuriously appointed for your utmost comfort and enjoyment. Elevated master ensuite finishes include wood grain cabinetry and freestanding soaker tubs, while heated flooring, custom millwork, and quartz countertops are design-standard throughout.



LIFE ABOVE IT ALL

Discover the pinnacle of outdoor living on your private, semi-covered penthouse terrace. Skywater's contemporary three-bedroom and den Penthouse residences offer an average of 4,700 square feet of meticulously designed indoor/outdoor living space. Enjoy 180 degree views of breathtaking Okanagan Lake and surrounding mountains from your one-of-a-kind terrace.



SKYWATER

AT MOVALA

PENTHOUSE COLLECTION

Kelowna's Most Walkable Beachside Neighbourhood

- Step out your front door and walk to Pandosy Village, Gyro Beach, parks, shopping, grocery stores, yoga studios, art galleries, restaurants, biking and walking paths
- Just a few minutes drive to downtown Kelowna and world-class wineries

A Landmark Design

- Thoughtfully designed by local experts
- Modern concrete construction, accented by dynamic curves and warm tones, complement the natural landscape and vibrant beachside neighbourhood
- Multi-level design for families and buyers who desire beachside living and the flexibility of a larger space
- Leading-edge LEED environmental certification with sustainable building practices
- EV capable parking

Exclusive Residence Club Amenities

- 1,800 sf fitness facility equipped with weights, cardio equipment, and a yoga studio/flex room
- Washroom facilities & change rooms
- Wine storage room with individual lockers
- Private dining & celebration room
- Fully equipped catering kitchen
- Guest suite with kitchenette
- 530 sf games room and TV lounge
- Business centre with work hubs
- Private banquet room with gas fireplace and lounge seating adjacent to the outdoor gardens
- Resident library

The Beach Club

- For residents only, this secure space features storage for outdoor watersports equipment, e-bikes and more
- Pet wash station

The Lakeside Veranda

- Expansive, elevated landscaped grounds including walkways, Bocce Lawn & seating areas
- Lake view swimming pool overlooking Okanagan Lake
- Hot Tub
- Cabanas
- Outdoor showers and change rooms
- Numerous fire tables with lounge seating throughout the private, elevated outdoor amenity space
- Alfresco dining area with an outdoor BBQ area

Peace of Mind

- Covered by a comprehensive 2-5-10 year New Home Warranty Program
- With a prohibitive short-term rental policy, MOVALA offers longer term rental potential while encouraging quiet year-round enjoyment for its residents

Thoughtfully Curated Living Spaces

- Timeless Kentwood European Plank Collection 3mm hardwood flooring throughout the bedrooms, kitchen, den, powder room, and laundry room
- Impressive large format tile surrounding a linear 60" vapor fireplace that uses revolutionary ultrasonic technology to produce a fine mist that creates the lifelike illusion of flames and smoke
- Temperature-controlled wine display with framed clear glass doors
- Sophisticated built-in flat panel millwork for the wine display and other custom accents in your home
- Custom built-in walk-in closet in the primary bedroom
- Solid core interior doors for added durability and soundproofing
- 9' ceilings throughout, with no drops or bulkheads
- Sleek and sophisticated energy-efficient lighting fixtures
- Quiet and sustainable heating & cooling systems
- Front-loading Whirlpool washer and dryer
- Two contemporary colour palettes to choose from: Sand & Stone

Kitchens That Inspire

- Your choice of convenient touchless chrome, satin nickel or matte black pull-down faucet
- Natural granite composite under-mount double bowl sink
- Cohesive quartz countertops, backsplash, and rangehood
- Elegant cylindrical light fixture over the island
- Convenient clean up with two dishwashers
- Butler's pantry with prep sink and additional storage
- Premium stainless steel appliance package
 - ◇ Integrated, panel 48" Bosch fridge and freezer
 - ◇ Bosch 36" induction cooktop
 - ◇ Bosch 30" double wall oven
 - ◇ 24" microwave drawer with smoked glass window
 - ◇ Two Bosch dishwashers

Upscale Bathrooms

- Dramatic flair with large format porcelain tile in the showers
- Primary ensuite shower features dual rain heads
- Option of chrome or matte black Riobel plumbing fixtures
- Primary ensuite features a freestanding bathtub
- Dual sink vanity with custom built-ins in a stunning wood grain finish in the Primary Ensuite
- Sleek under-mount sinks with quartz countertops
- Contemporary vanity with flat-panel lacquered cabinets in grey tones in secondary baths
- Cabinet hardware and bathroom accessories are available in chrome or matte black finish
- Efficient dual flush toilets
- Heated flooring is included in all bathrooms in your home

SKYWATER

AT MOVALA

PERSONALIZING YOUR SIGNATURE PENTHOUSE WITH BEGRAND FAST DESIGN

As a Skywater Signature Penthouse Owner, you can personalize the interior design to create your perfect living space.

Award winning Begrand Fast Design is at your service to inspire and facilitate your interior design dreams to produce a true Signature Penthouse home that is reflective of both this remarkable setting and your taste for the exceptional.

Within 2 weeks of purchasing your home, Begrand Fast Design will provide a schedule of meetings and selection timelines that will ensure your home is built and available for occupancy on time.



You have up to 200 hours of design assistance and project management with the award-winning Begrand Fast Design team.

PERSONALIZE ANY OF THE FOLLOWING ITEMS:

- Full bathroom flooring and wall tile
 - ◇ Up to two selections, i.e., one for the ensuite bath and one for the secondary baths
- Main flooring specifications
- Kitchen, bathroom, laundry, and niche millwork: finish and style
 - ◇ Primary bedroom millwork detail will be per Begrand Fast's designs, but a new finish can be selected
- Plumbing finish
- Bathroom accessory finishes
- Kitchen, bathrooms, and laundry countertop selection
 - ◇ Up to two countertop selections, i.e., one for the kitchen and one for baths and laundry
- Kitchen backsplash
 - ◇ Quartz or Tile selection
- Kitchen hood fan finish
- Millwork or quartz selection, depending on backsplash selection
- Fireplace: area surrounding the fireplace can be customized
- Wall colour selection
 - ◇ One colour throughout
- Decorative lighting fixture selection
 - ◇ Kitchen island (3 fixtures or 1 linear fixture)
 - ◇ Dining area
 - ◇ Primary bedroom - bedside
 - ◇ Secondary bedrooms – ceiling flush mount
 - ◇ Den – ceiling flush mount
- Primary bedroom closet finish and design with local supplier, Urban Closets

THE FOLLOWING ITEMS CANNOT BE PERSONALIZED:

- Appliance locations and specifications
- Plumbing locations and specifications
- Wine display: layout and location
- Fireplace location and specification
- Walls, doors & window locations, and specifications
- Lighting locations and general lighting specifications
- Door hardware
- Kitchen, bathrooms, laundry, and niche millwork: design, layout and locations
- Bathroom accessories
- Secondary bathrooms & laundry room millwork will have flat panel doors (colour choice is customizable)

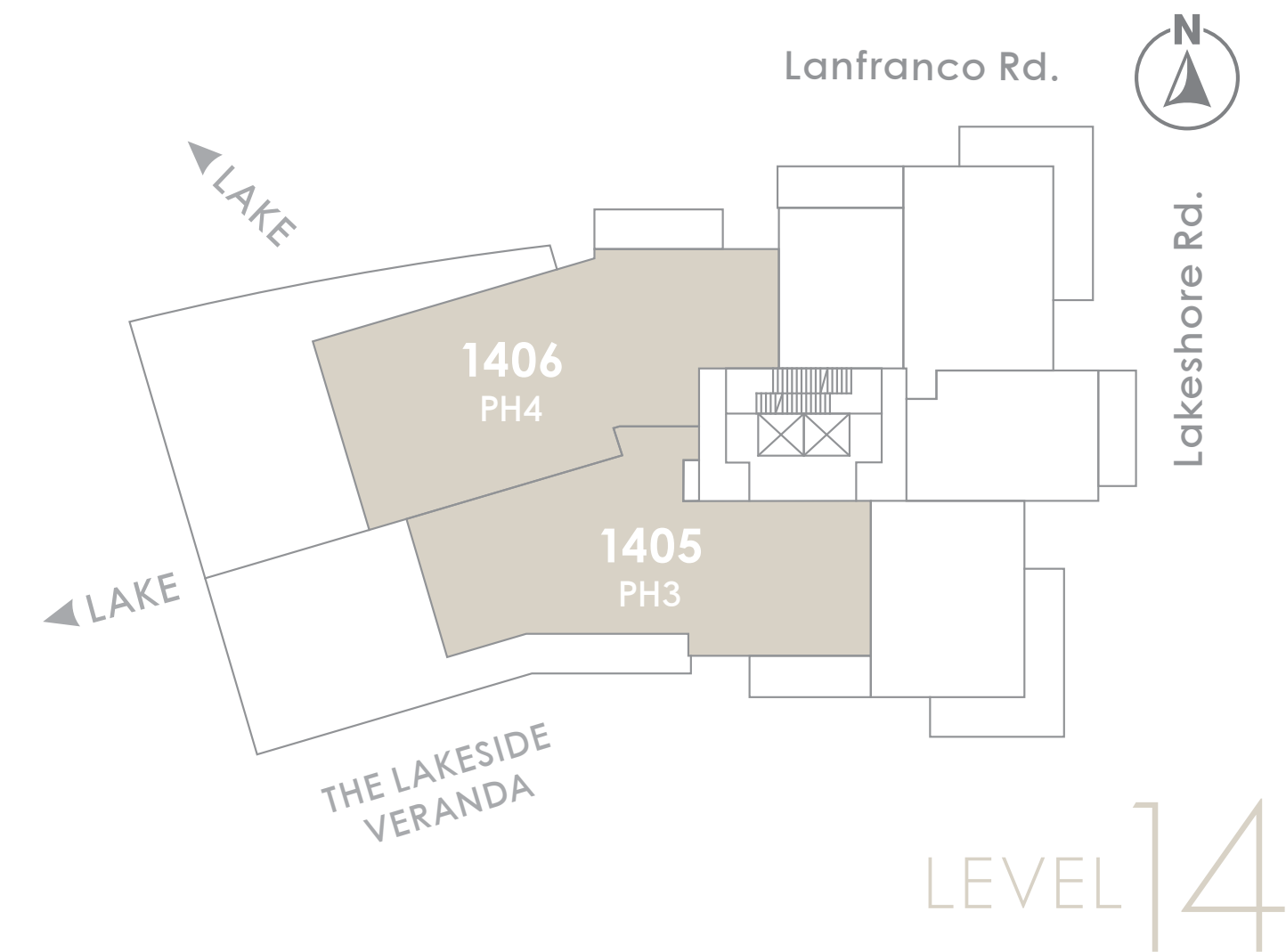
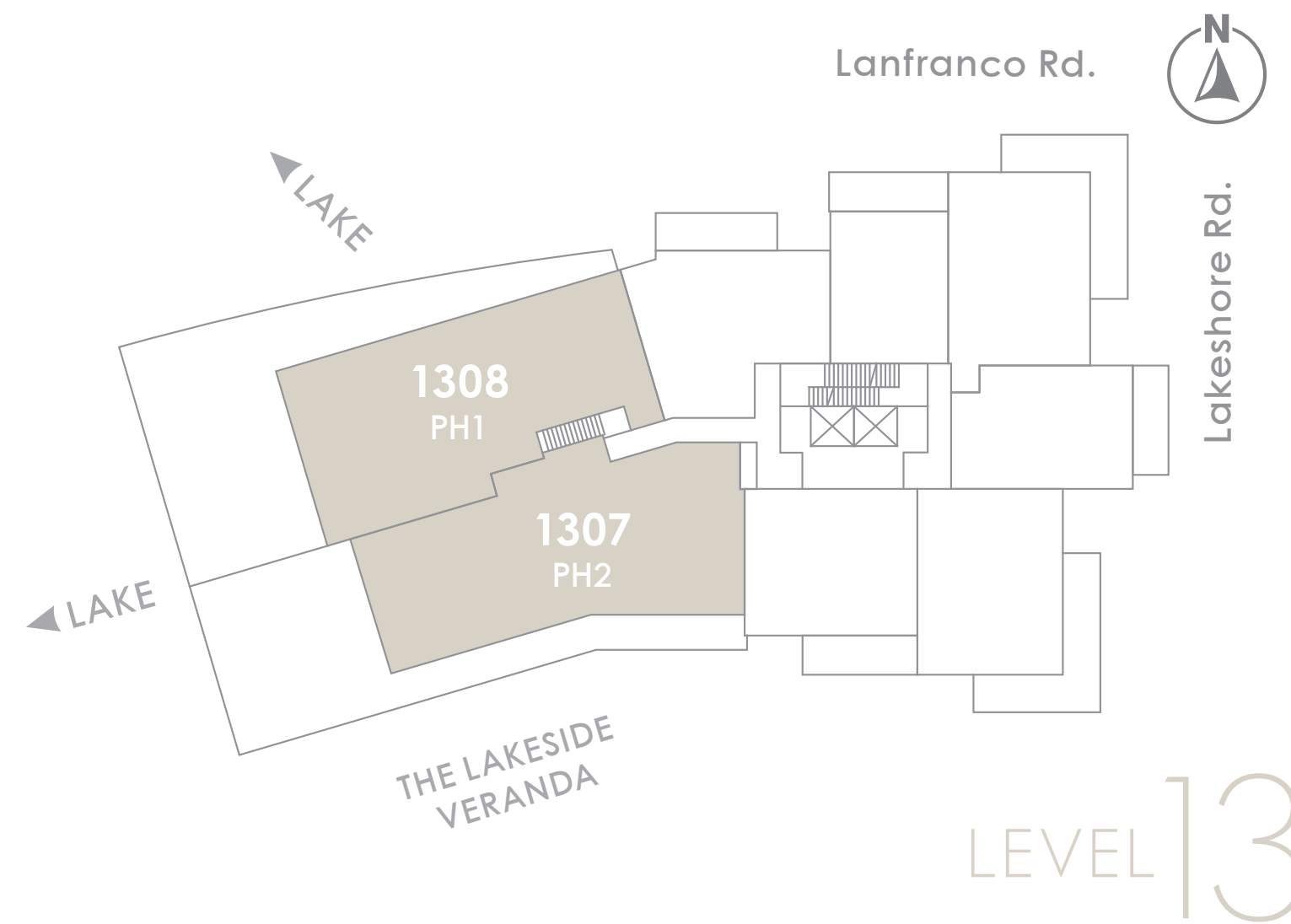
PLEASE NOTE FOLLOWING:

- We can not use gas appliances or fireplaces. However, the fireplace insert could be changed from vapor to electric for an additional fee pending selected fireplace
- Any additional hours required over and above 200 will be billed directly to you at a rate of \$150/hour
- All changes to the included base specification must remain within the finishing allowance allocated to the home
- Any custom selections made over the allocated personalization shall be charged directly to the purchaser at a rate of cost + 20%.
- All new selections to be approved by Begrand Fast Design & the construction team to ensure ordering and delivery lead times work within overall construction schedule
- Any new selections made below the allocated allowance are not eligible for a credit

PENTHOUSE COLLECTION KEYPLAN

SKYWATER

AT MOVALA



DRAFT

Penthouse 1

3 Bed + Den, 3.5 Bath

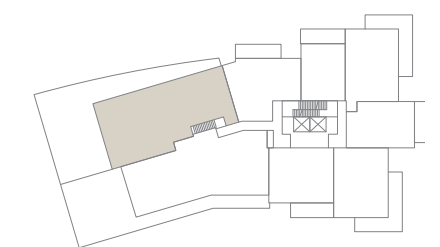
Interior: 2,370 SF

Exterior: 2,206 SF

Total: 4,576 SF

SKYWATER

AT MOVALA



LEVEL 13



PENTHOUSE COLLECTION

DRAFT

Penthouse 2

3 Bed + Den, 2.5 Bath

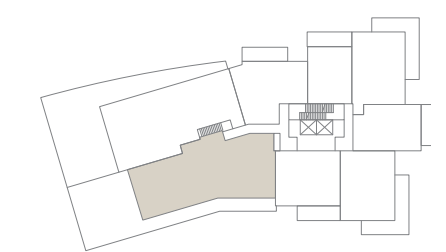
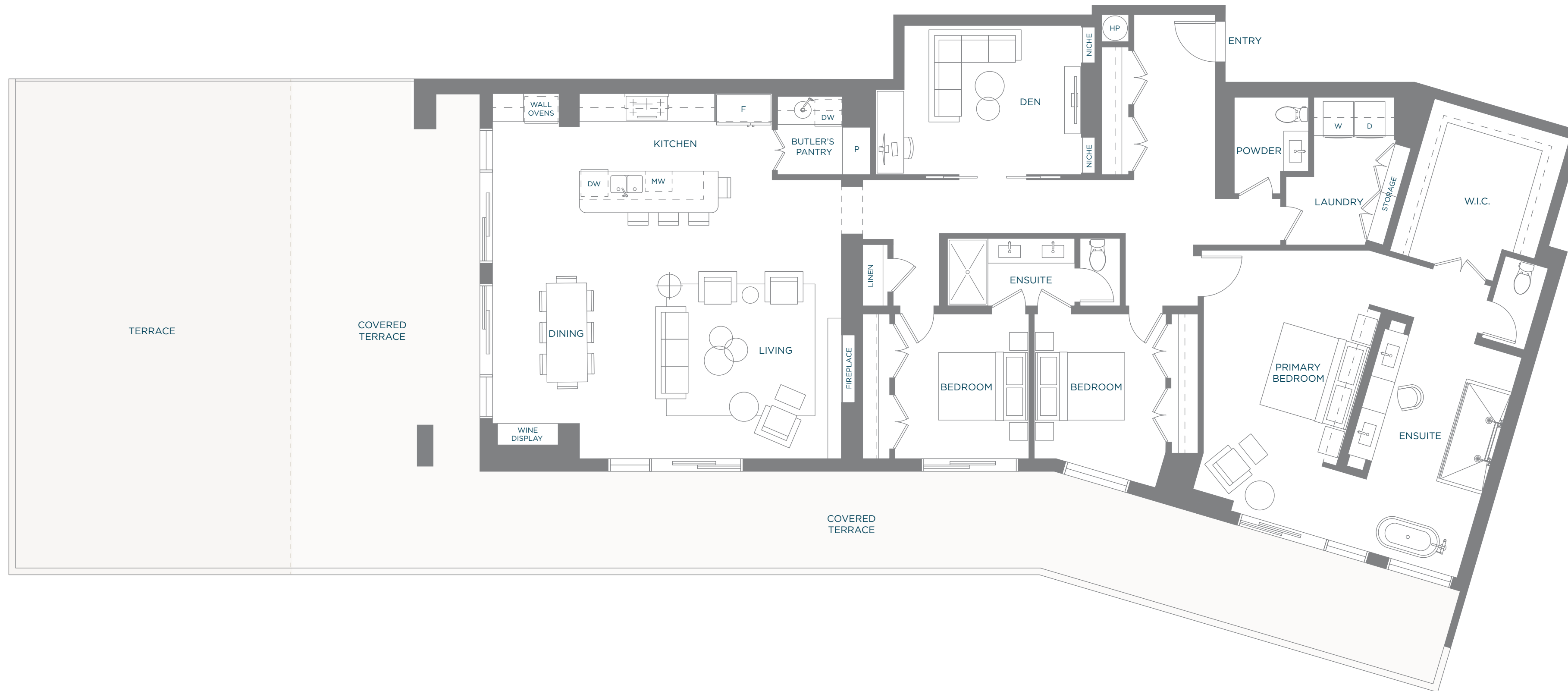
Interior: 2,442 SF

Exterior: 1,793 SF

Total: 4,235 SF

SKYWATER

AT MOVALA



LEVEL 13



PENTHOUSE COLLECTION

DRAFT

Penthouse 3

3 Bed + Den, 3.5 Bath

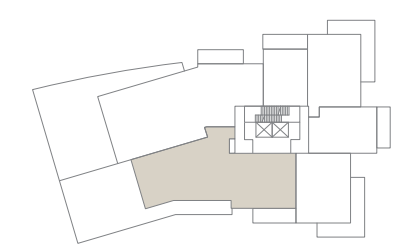
Interior: 2,701 SF

Exterior: 1,981 SF

Total: 4,682 SF

SKYWATER

AT MOVALA



LEVEL 14



PENTHOUSE COLLECTION

DRAFT

Penthouse 4

3 Bed + Den, 3.5 Bath

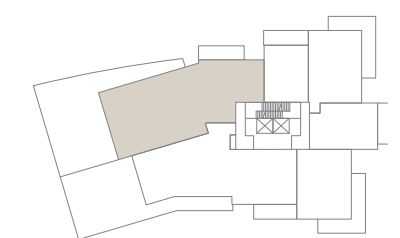
Interior: 2,914 SF

Exterior: 2,200 SF

Total: 5,114 SF

SKYWATER

AT MOVALA



LEVEL 14



PENTHOUSE COLLECTION

DRAFT

SKYWATER

AT MOVALA

EMBRACE THE PINNACLE OF BEACHSIDE LIVING

PRESENTATION CENTRE NOW OPEN

103 – 3327 LAKESHORE ROAD | KELOWNA, BC V1W 3S9 | 250-870-8591

MOVALA.CA

epic
REAL ESTATE
SOLUTIONS

